



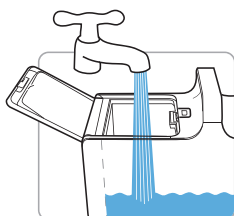
GRPRO[®] 2.1 QUICK START



1

FILL RESERVOIR

Add water to the reservoir fill-line.
DO NOT OVERFILL.



2

ADD ICE

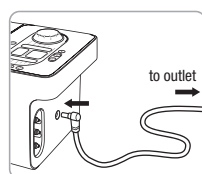
Add it to top of reservoir.
Replenish the ice as necessary.



3

CONNECT POWER

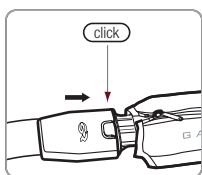
Connect AC Adapter to the receptacle on the end of the Control Unit, then plug the AC Adapter into an electrical outlet



4

CONNECT WRAP

Connect Hose to Wrap, then to Control Unit. Apply Wrap.



5

PRESS POWER



6

CHOOSE MODE

a) PROGRAM or b) MANUAL



Push Program button for Program Mode. Push button repeatedly to reach programs 1-6. Refer to User Manual or ask your care provider for a list of program options.



Manually set the time using the +/- buttons.



Manually set the desired pressure.



7

PRESS PLAY/PAUSE

Press the Play/Pause button to begin treatment.



Use the knob to adjust the temperature as needed.

GAME  READY[®]

WARNING: Follow the recommendations of your health care practitioner regarding the frequency and duration of use. Improper placement or prolonged use of the GRPro 2.1 could result in tissue damage. Discontinue use immediately if you experience burning, itching, or increased pain and swelling. Monitor the skin receiving cold therapy frequently and discontinue use if changes such as blisters, increased redness, discoloration, or welts occur.



WARNING: It is mandatory to fully read and understand the User Manual before using the device. Failure to follow operating instructions could result in serious injury.



IMPORTANT: Read complete indications, contraindications, cautions, and warnings before using this product.